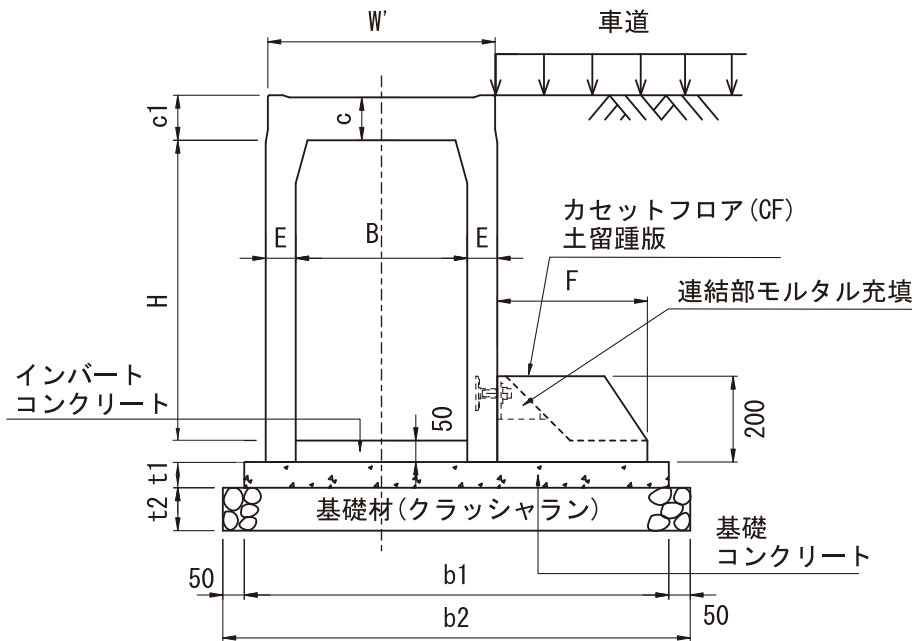


土留OS側溝 一般図

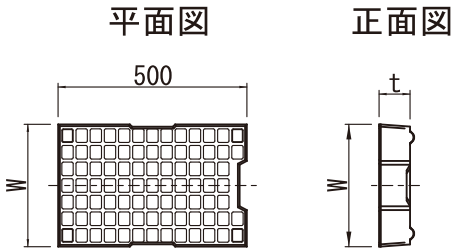
標準断面図



※ 歩道脇に設置する場合は、別途計算を要す

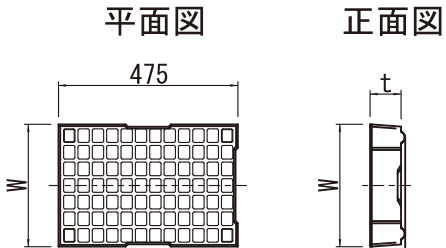
蓋版

溝蓋 (L=500)



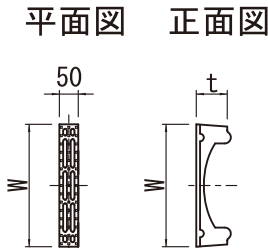
内幅 B	寸法 (mm)		重量 (kg)
	W	t	
300	324	82	32
400	424	97	47
500	534	112	69
600	644	127	96

溝蓋 (L=475)



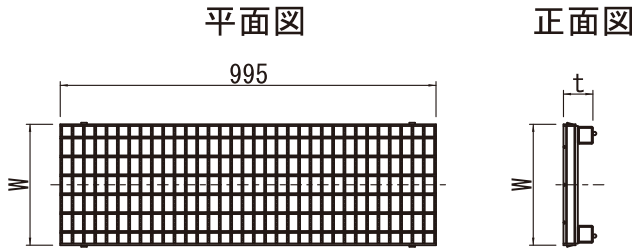
内幅 B	寸法 (mm)		重量 (kg)
	W	t	
300	324	82	30
400	424	97	46
500	534	112	67
600	644	127	95

セーフティグレーチング (L=50)



内幅 B	寸法 (mm)		重量 (kg)
	W	t	
300	324	82	2.6
400	424	97	4.5
500	534	112	5.8
600	644	127	8.4

グレーチング・普通目 (L=995)



内幅 B	寸法 (mm)		重量 (kg)
	W	t	
300	320	78	24
400	420	95	38
500	530	110	49
600	640	125	65

製品規格寸法・重量及び使用材料一覧表

土留 OS 本体						カセットフロア		基礎寸法 (mm)				材料表 (10m 当り)											
内幅 B	内空 H	寸法 (mm)				製品部 参考質量 (kg)	かかと幅 F	参考質量 (kg)	b1	b2	t1	t2	基礎 コンクリート (㎡)	基礎材		型枠 (㎡)							
		W'	c	c1	E									施工面積 (㎡)	体積 (㎡³)								
300	300	420	85	89.5	60	318	250	141	770	870	50	100	0.39	8.7	0.87	1.0							
	400				60	376	250	141	770	870			0.39	8.7	0.87								
	500				60	434	300	152	820	920			0.41	9.2	0.92								
	600				75	584	300	152	850	950			0.43	9.5	0.95								
	700				75	656	350	167	900	1000			0.45	10.0	1.00								
	800				75	728	400	185	950	1050			0.48	10.5	1.05								
	900				75	800	450	200	1000	1100			0.50	11.0	1.10								
	1000				85	972	500	210	1070	1170			0.54	11.7	1.17								
	1100				85	1054	550	247	1120	1220			0.56	12.2	1.22								
	1200				85	1136	600	264	1170	1270			0.59	12.7	1.27								
400	400	530	100	105	65	446	250	141	880	980	60	100	0.53	9.8	0.98	1.2							
	500				65	509	250	141	880	980			0.53	9.8	0.98								
	600				65	571	300	152	930	1030			0.56	10.3	1.03								
	700				70	670	350	167	990	1090			0.59	10.9	1.09								
	800				70	737	400	185	1040	1140			0.62	11.4	1.14								
	900				80	896	450	200	1110	1210			0.67	12.1	1.21								
	1000				80	973	500	210	1160	1260			0.70	12.6	1.26								
	1100				90	1161	500	210	1180	1280			0.71	12.8	1.28								
	1200				90	1248	550	247	1230	1330			0.74	13.3	1.33								
	500				400	650	115	120	75	548			250	141	1000		1100	75	100	0.75	11.0	1.10	1.5
500		75	620	250	141				1000	1100	0.75	11.0	1.10										
600		75	692	300	152				1050	1150	0.79	11.5	1.15										
700		75	746	350	167				1100	1200	0.83	12.0	1.20										
800		75	836	400	185				1150	1250	0.86	12.5	1.25										
900		85	1002	450	200				1220	1320	0.92	13.2	1.32										
1000		85	1083	450	200				1220	1320	0.92	13.2	1.32										
1100		85	1165	500	210				1270	1370	0.95	13.7	1.37										
1200		95	1369	550	247				1340	1440	1.01	14.4	1.44										
1300		95	1460	600	264				1390	1490	1.04	14.9	1.49										
1400		95	1551	650	282				1440	1540	1.08	15.4	1.54										
600		500	760	130	135				80	708	250	141	1110	1210	100	100	1.11			12.1	1.21	2.0	
		600							80	765	300	152	1160	1260			1.16			12.6	1.26		
		700							80	862	300	152	1160	1260			1.16			12.6	1.26		
	800	80				939	350	167	1210	1310	1.21	13.1	1.31										
	900	80				1015	400	185	1260	1360	1.26	13.6	1.36										
	1000	90				1197	450	200	1330	1430	1.33	14.3	1.43										
	1100	90				1238	500	210	1380	1480	1.38	14.8	1.48										
	1200	90				1370	550	247	1430	1530	1.43	15.3	1.53										
	1300	100				1589	550	247	1450	1550	1.45	15.5	1.55										
	1400	100				1685	600	264	1500	1600	1.50	16.0	1.60										
	1500	100				1781	650	282	1550	1650	1.55	16.5	1.65										

[illegible]

Technical drawing of a mechanical part, likely a bracket or support, showing dimensions in millimeters. The part features a base plate with a central cutout and a vertical support structure. Key dimensions include:

- Overall width: 920
- Base plate width: 820
- Base plate thickness: 50
- Top flange width: 420
- Top flange thickness: 89.5
- Internal width of top flange: 300
- Internal width of base plate cutout: 300
- Internal width of base plate: 60
- Internal width of base plate cutout: 60
- Internal width of base plate cutout: 85
- Internal width of base plate cutout: 100
- Internal width of base plate cutout: 500
- Internal width of base plate cutout: 200

The label "インバータ" (Inverter) is located near the base plate cutout.

Technical drawing of a rectangular structure, likely a component of a machine or a container. The drawing shows a cross-section with various dimensions and labels.

Dimensions (mm):

- Overall width: 950
- Overall height: 1000 (100 + 50 + 600 + 89.5)
- Top width: 420
- Top thickness: 8.5
- Inner width: 300
- Inner height: 600
- Side thickness: 75
- Right side thickness: 300
- Right side height: 200
- Bottom thickness: 50
- Bottom width: 850

Labels:

- インポート (Import)

Technical drawing of a rectangular structure with dimensions:

- Top flange width: 420
- Top flange height: 89.5
- Top flange inner width: 85
- Main body height: 800
- Main body width: 300
- Base flange width: 75
- Base flange height: 50
- Side flange width: 400
- Side flange height: 200
- Base flange gap: 4
- Base flange label: インポート
- Total width: 1050
- Total height: 950

Technical drawing of a rectangular box with dimensions and labels. The drawing shows a top view and a side view. The top view dimensions are 530 (width) and 980 (length). The side view dimensions are 105 (height), 400 (width), and 200 (depth). The drawing includes a label 'インポート' (Import) and a small detail of a component on the right side.

Technical drawing of a concrete structure showing dimensions and reinforcement details. The drawing includes a cross-section of a wall and a plan view of the base. Key dimensions include a total width of 530, a base width of 980, and a base height of 100. Reinforcement details include a 100mm diameter bar, a 65mm diameter bar, and a 250mm diameter bar. The text "インポート" (Import) is visible.

[illegible]

Technical drawing of a rectangular box with the following dimensions and labels:

- Top width: 530
- Top depth: 105
- Front depth: 700
- Front width: 400
- Side depth: 350
- Bottom width: 990
- Bottom depth: 100
- Bottom flange width: 50
- Bottom flange depth: 50
- Internal width: 400
- Internal depth: 70
- Internal label: インポート

Technical drawing of a rectangular structure, likely a component of a machine or a container. The drawing shows a side view with dimensions in millimeters (mm). The overall width is 1140 mm, and the overall height is 1040 mm. The structure has a central vertical section with a width of 530 mm and a height of 800 mm. The top section has a width of 105 mm and a height of 100 mm. The bottom section has a width of 100 mm and a height of 50 mm. The structure is supported by a base with a width of 1040 mm and a height of 50 mm. The base is labeled "インポート" (Import) and "インポート" (Import). The drawing also shows a cross-section of the structure with a width of 400 mm and a height of 200 mm. The cross-section is labeled "インポート" (Import) and "インポート" (Import).

Technical drawing of a mechanical part, likely a mold or die, showing a cross-section. The drawing includes dimensions in millimeters:

- Overall width: 1210
- Overall height: 900
- Top flange width: 530
- Top flange thickness: 105
- Central cavity width: 400
- Various other features like a 450mm wide section on the right and a 1110mm wide base.
- The text "インポート" (Import) is visible near the central cavity.

Technical drawing of a rectangular box with the following dimensions and features:

- Top width: 530
- Top height: 105
- Inner width: 100
- Main body height: 1000
- Inner height: 400
- Side flange width: 80
- Right side flange width: 500
- Right side height: 200
- Bottom flange height: 50
- Bottom flange width: 1260
- Bottom flange offset: 50
- Bottom flange material: Indicated by a hatched pattern.
- Label: インポート (Import)

Technical drawing of a vertical structure, likely a chimney or stack, showing dimensions in millimeters. The drawing includes a side elevation and a cross-section.

**Side Elevation Dimensions:**

- Top width: 530
- Top flange width: 100
- Top flange height: 105
- Main body height: 1100
- Base height: 50
- Base width: 100
- Internal width at base: 400
- Internal width at top: 90
- Internal width at middle: 90
- Internal width at bottom: 500
- Internal width at top: 200

**Cross-section Dimensions:**

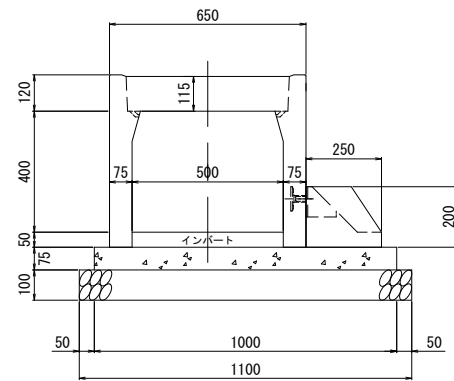
- Base width: 1180
- Base height: 50
- Internal width: 1280
- Internal height: 50

**Labels:**

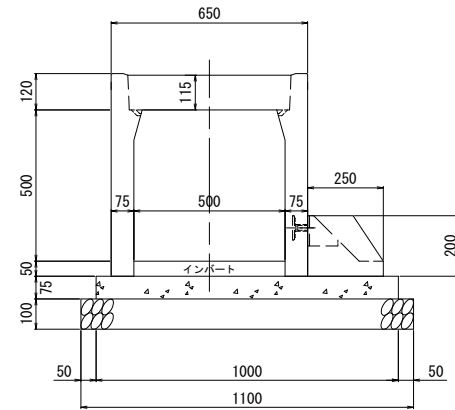
- インポート (Import)

[illegible]

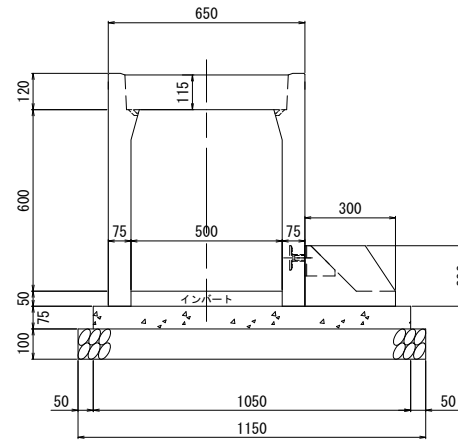
B × H=500 × 400 底版長250mm



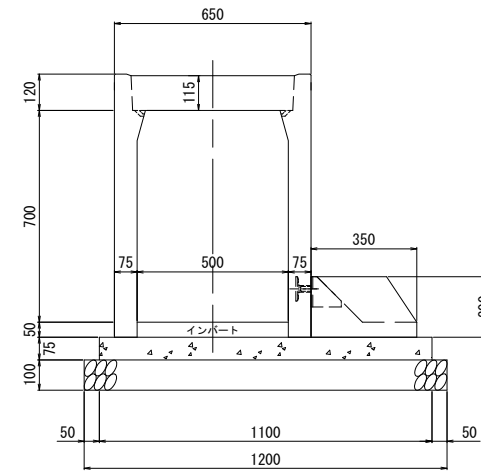
B × H=500 × 500 底版長250mm



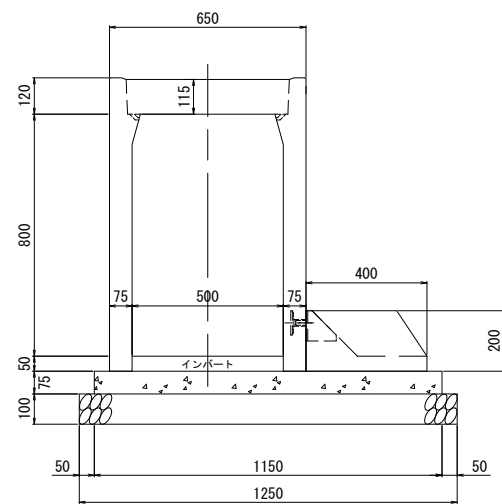
B × H = 500 × 600 底版長300mm



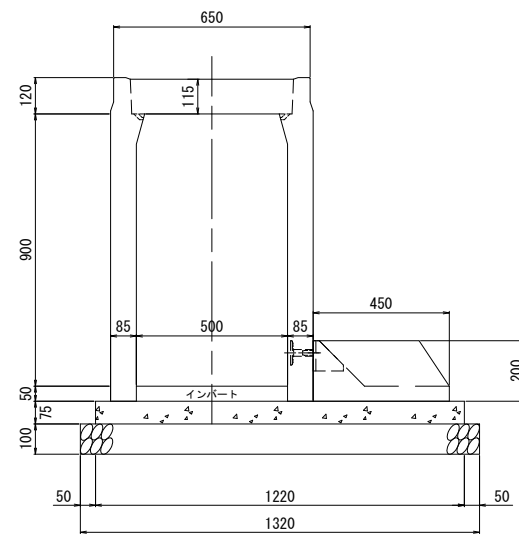
B × H=500 × 700 底版長350mm



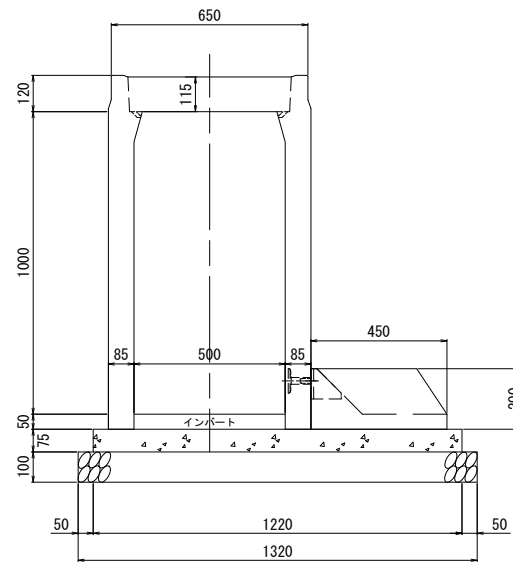
B × H = 500 × 800 底版長400mm



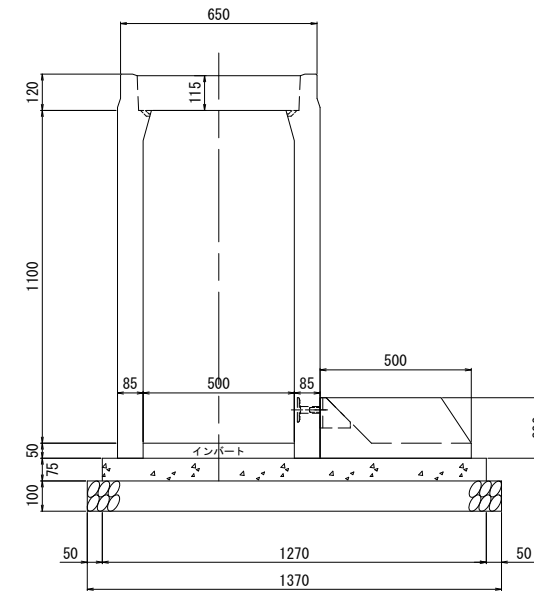
B × H=500 × 900 底版長450mm



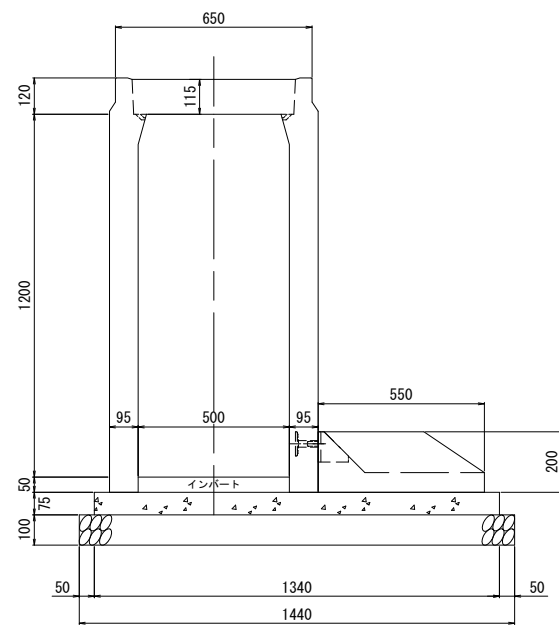
B×H=500×1000 底版長450mm



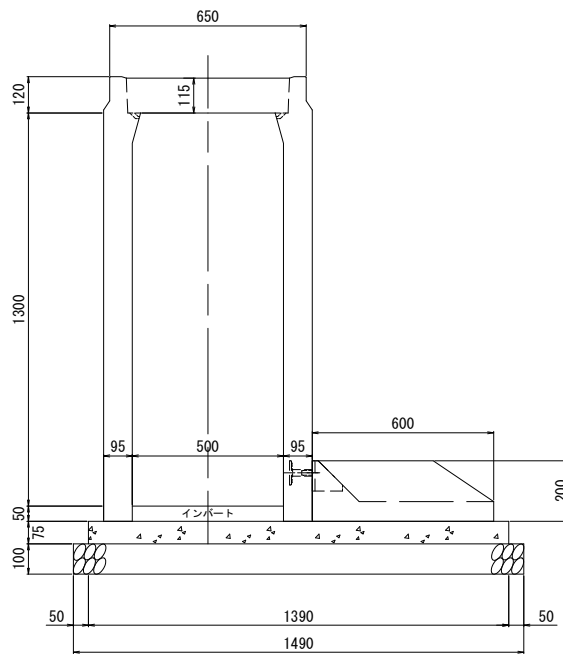
B×H=500×1100 底版長500mm



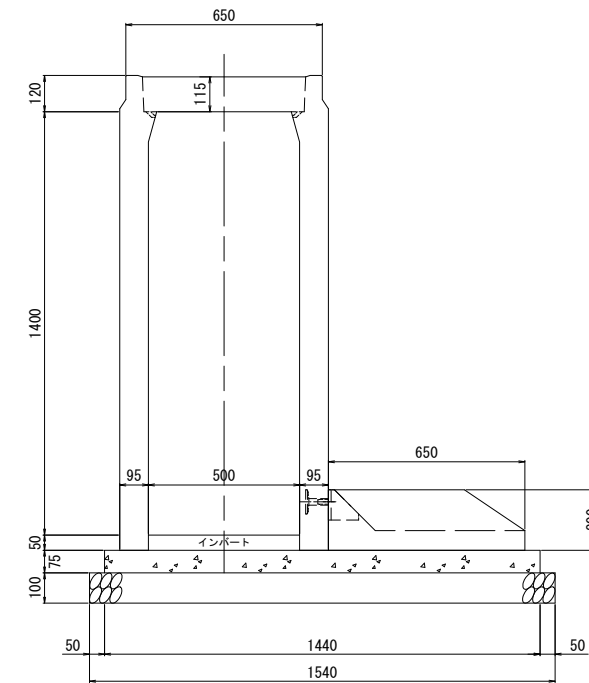
B×H=500×1200 底版長550mm



B × H = 500 × 1300 底版長600mm



B×H=500×1400 底版長650mm



Technical drawing of a rectangular structure, likely a cross-section of a building component. The drawing includes the following dimensions and labels:

- Overall width: 760
- Overall height: 135
- Internal width: 600
- Internal height: 130
- Left side height segments: 500, 50, 100
- Right side height segments: 250, 200
- Internal width segments: 80, 80
- Label: インポート (Import)
- Bottom width segments: 50, 1110, 50
- Bottom total width: 1210

Technical drawing of a rectangular structure, likely a mold or container, showing dimensions and internal features. The drawing includes a top view and a side view.

**Top View Dimensions:**

- Overall width: 760
- Overall height: 600
- Inner width: 600
- Inner height: 130
- Side flange width: 80
- Bottom flange width: 300
- Bottom flange height: 200
- Bottom flange thickness: 50
- Bottom flange width (excluding side flanges): 1160
- Bottom flange width (including side flanges): 1260

**Side View Dimensions:**

- Overall height: 135
- Inner height: 130
- Side flange width: 80
- Bottom flange width: 300
- Bottom flange height: 200
- Bottom flange thickness: 50
- Bottom flange width (excluding side flanges): 1160
- Bottom flange width (including side flanges): 1260

**Labels:**

- インポート (Import)
- インポート (Import)

Technical drawing of a rectangular structure, likely a mold or frame, showing dimensions and internal features. The drawing includes a top view and a side view.

**Top View Dimensions:**

- Overall width: 760
- Overall height: 700
- Inner width: 600
- Inner height: 130
- Side flange width: 80
- Bottom flange width: 300
- Bottom flange height: 50
- Bottom flange thickness: 100
- Bottom flange material: インポート (Import)

**Side View Dimensions:**

- Overall width: 1260
- Overall height: 700
- Inner width: 600
- Inner height: 130
- Side flange width: 80
- Bottom flange width: 300
- Bottom flange height: 50
- Bottom flange thickness: 100
- Bottom flange material: インポート (Import)

The drawing shows a rectangular structure with a central opening. The top view shows a rectangular frame with a central opening of 600x130. The side view shows a rectangular frame with a central opening of 600x130. The bottom flange is labeled "インポート" (Import).

Technical drawing of a rectangular structure, likely a mold or container, showing dimensions and internal features. The drawing includes a top view and a side view.

**Dimensions:**

- Overall width: 760
- Overall height: 800
- Top flange width: 135
- Top flange thickness: 130
- Internal width: 600
- Internal height: 80
- Right side flange width: 350
- Right side flange thickness: 80
- Bottom flange width: 50
- Bottom flange thickness: 100
- Overall length: 1210
- Overall length including bottom flange: 1310

**Labels:**

- インポート (Import)
- 90°

Technical drawing of a rectangular structure, likely a mold or container, showing dimensions and internal features. The drawing includes a top view and a side view.

**Dimensions:**

- Overall width: 760
- Overall height: 900
- Top flange width: 130
- Top flange height: 135
- Internal width: 600
- Internal height: 80
- Right side flange width: 400
- Right side flange height: 200
- Bottom flange width: 1260
- Bottom flange height: 100
- Overall bottom width: 1360
- Overall bottom height: 50

**Labels:**

- インポート (Import)

[illegible][illegible]

Technical drawing of a rectangular structure, likely a container or a piece of equipment, showing dimensions and internal features.

Dimensions (mm):

- Overall width: 760
- Overall height: 1200
- Top flange height: 135
- Internal width (at top): 130
- Internal width (at bottom): 600
- Side flange height: 90
- Bottom flange height: 50
- Base height: 100
- Internal width (at base): 1430
- Overall width (including base): 1530
- Right side flange height: 550

Internal features:

- A central vertical dashed line indicates symmetry.
- A horizontal dashed line is labeled "インポート" (Import).
- A small detail view on the right shows a cross-section of the base flange with a 50mm dimension.

Technical drawing of a rectangular structure, likely a mold or container, showing dimensions and internal features. The drawing includes a top view and a side view.

**Dimensions:**

- Overall width: 760
- Overall height: 1300
- Top flange width: 135
- Internal width: 600
- Internal height: 130
- Base width: 100
- Base height: 50
- Side flange width: 550
- Side flange height: 200
- Overall base width: 1550
- Overall base height: 100
- Internal base width: 1450
- Internal base height: 50

**Labels:**

- インポート (Import)

Technical drawing of a rectangular structure, likely a mold or container, showing dimensions and internal features. The drawing includes a top view and a side view.

**Top View Dimensions:**

- Overall width: 1600
- Overall height: 1400
- Inner width: 760
- Inner height: 130
- Distance from left edge to inner wall: 100
- Distance from right edge to inner wall: 100
- Distance from bottom edge to inner wall: 100
- Distance from right edge to outer wall: 600
- Distance from bottom edge to outer wall: 200

**Side View Dimensions:**

- Overall width: 1600
- Overall height: 1400
- Inner width: 760
- Inner height: 130
- Distance from left edge to inner wall: 100
- Distance from right edge to inner wall: 100
- Distance from bottom edge to inner wall: 100
- Distance from right edge to outer wall: 600
- Distance from bottom edge to outer wall: 200

**Internal Features:**

- A central vertical channel with a width of 130.
- A horizontal channel at the bottom with a height of 100.
- A sloped internal wall on the right side.
- A label "インポート" (Import) is located near the bottom center.

Technical drawing of a rectangular structure, likely a container or enclosure, showing dimensions and internal components.

Dimensions (mm):

- Overall width: 1650
- Overall height: 1500
- Top flange width: 760
- Top flange height: 135
- Internal width: 600
- Internal height: 130
- Bottom flange width: 650
- Bottom flange height: 50
- Internal width (excluding side panels): 100
- Internal height (excluding top flange): 100

Labels:

- インポート (Import)